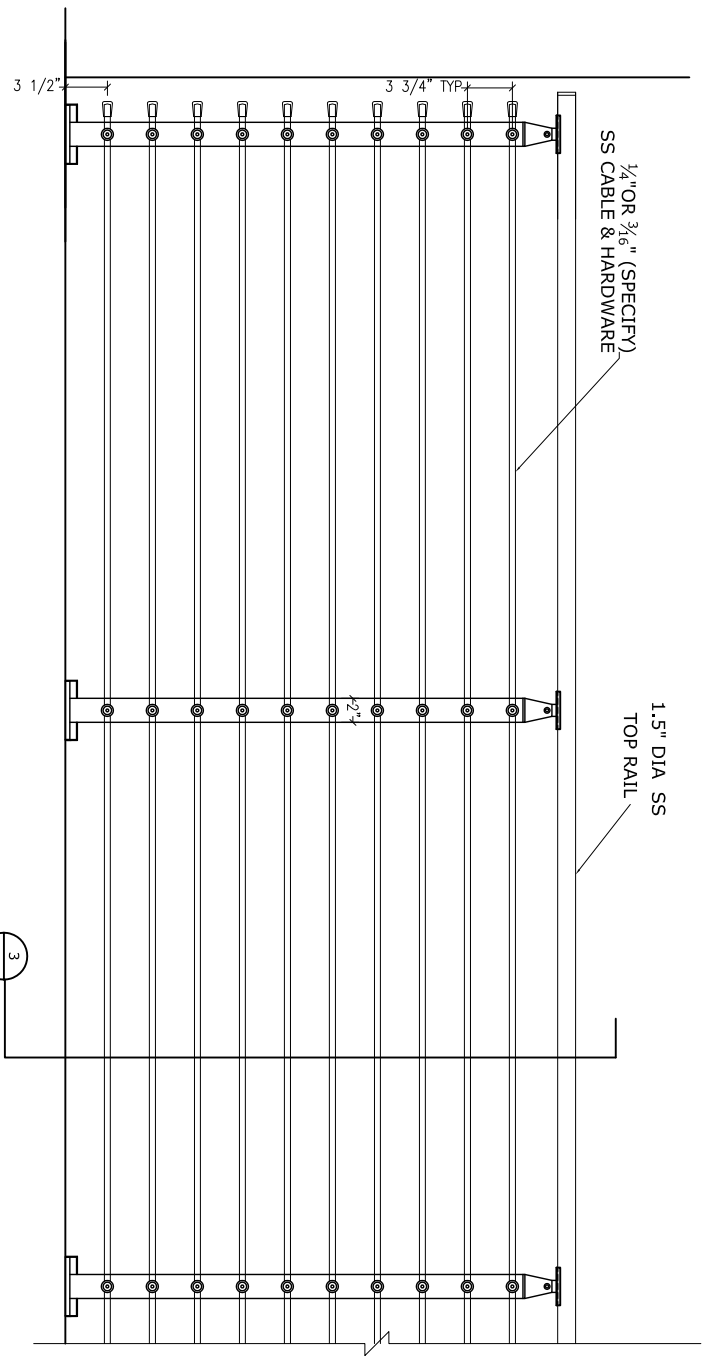
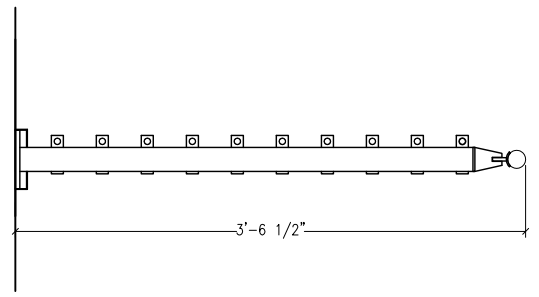


1 CUBE MULTI-LINE RAILING  
 PLAN  
 (CB-09)

NO.	REVISION	DATE



2 CUBE MULTI-LINE RAILING  
 ELEVATION  
 (CB-09)



3 SECTION  
 (CB-09)

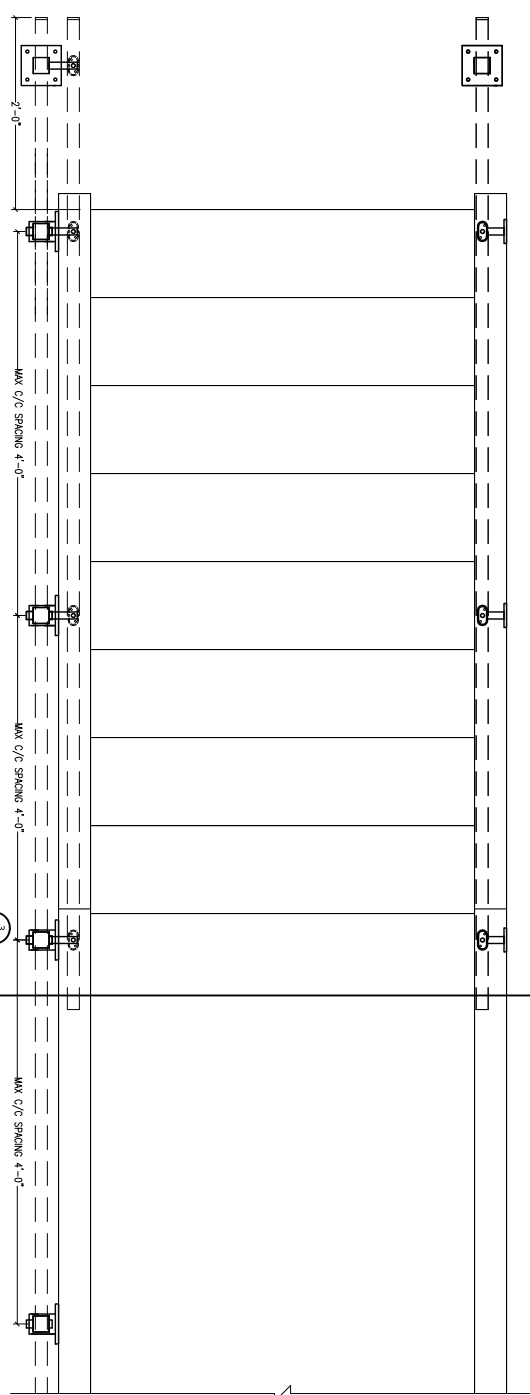
APPROVED FOR FABRICATION	
DATE	SIGNATURE

NOTE:  
 REFER CB-11 FOR MOUNTING OPTIONS  
 REFER CB-12 FOR CORNER OPTIONS

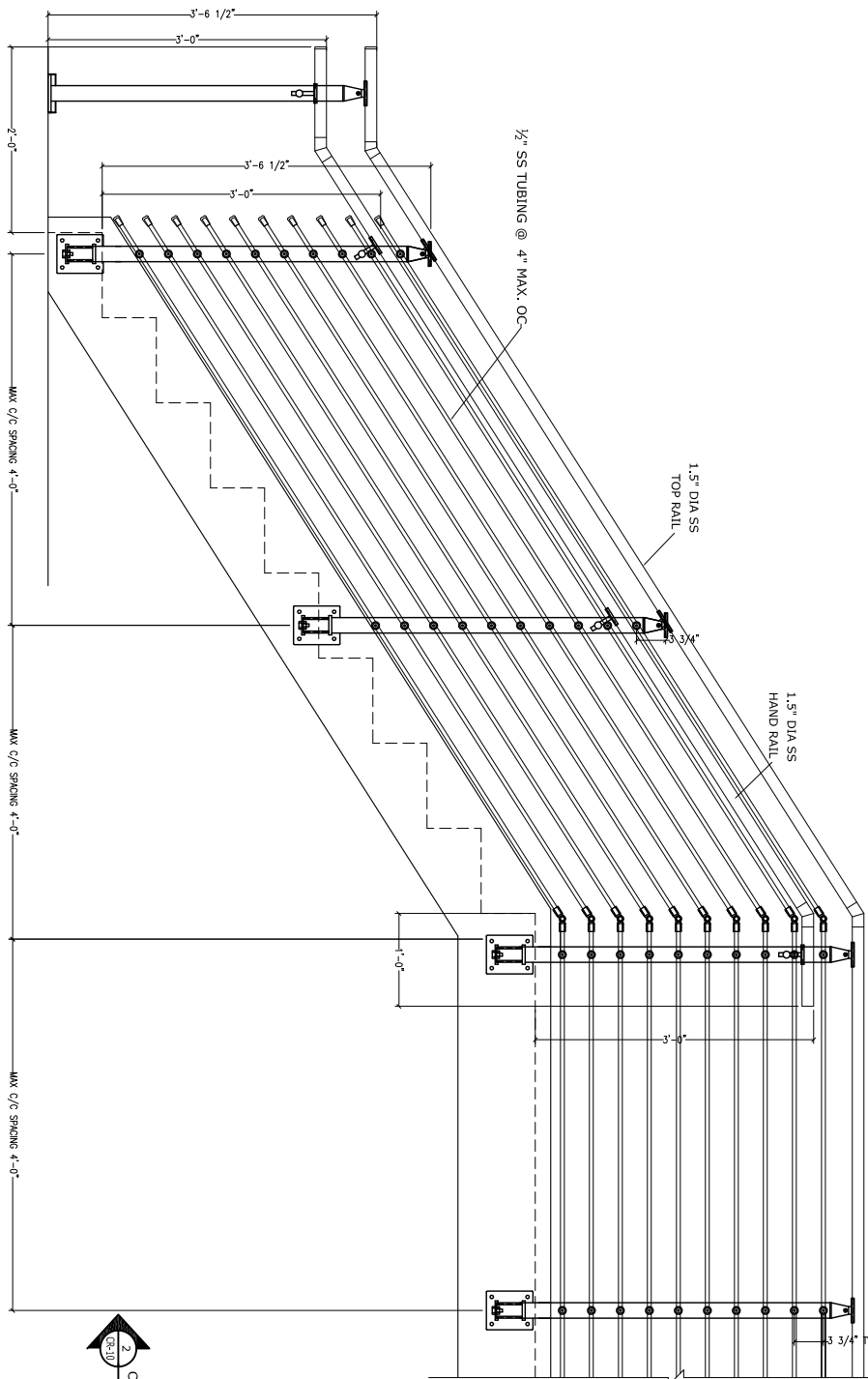
project: \_\_\_\_\_  
 scale: 3/4" = 1'-0"  
 submitted on: \_\_\_\_\_  
 client: \_\_\_\_\_  
 contract: VIA CUBE MULTI-LINE RAILING SYSTEM

drawn by: \_\_\_\_\_  
 checked by: \_\_\_\_\_  
 date: \_\_\_\_\_  
 drawing no.: CB-09

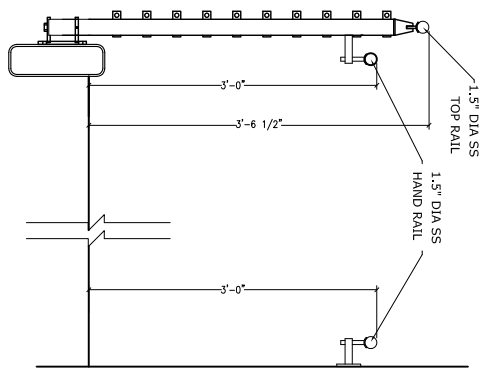
NO.	REVISIONS	DATE



1 CUBE MULTI-LINE RAILING - STAIR APPLICATION  
 PLAN



2 CUBE MULTI-LINE RAILING  
 SECTION

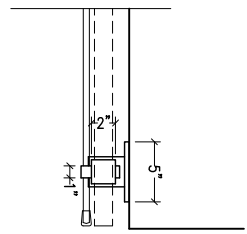


2 CUBE MULTI-LINE RAILING - STAIR APPLICATION  
 ELEVATION

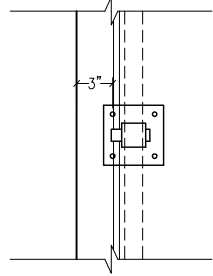
DATE	DESCRIPTION

contract: VIA CUBE MULTILINE RAILING SYSTEM  
 project: CB-10  
 scale: 1/2" = 1'-0"  
 submitted on:        
 client:        
 drawn by:        
 checked by:        
 date:        
 drawing no.:      

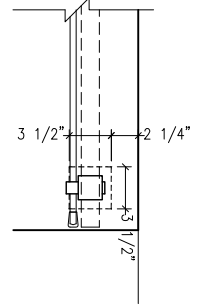
APPROVED FOR FABRICATION



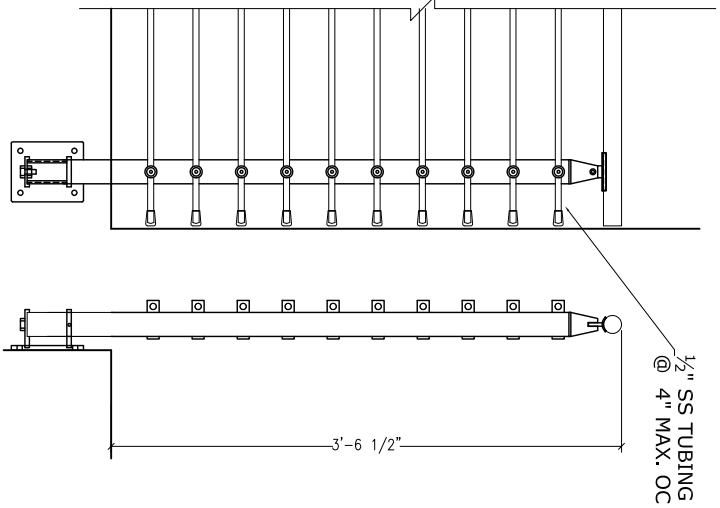
1 MULTI-LINE RAILING FASCIA MOUNTED PLAN



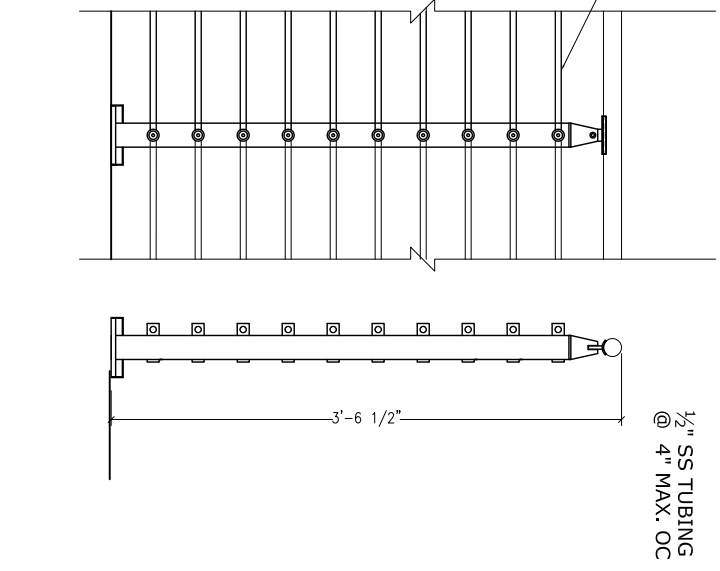
4 MULTI-LINE RAILING TOP MOUNTED PLAN



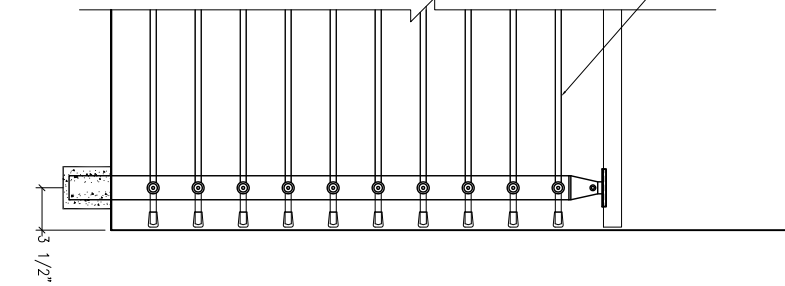
7 MULTI-LINE RAILING CORE MOUNTED PLAN



2 MULTI-LINE RAILING FASCIA MOUNTED ELEVATION



5 MULTI-LINE RAILING TOP MOUNTED ELEVATION



8 MULTI-LINE RAILING CORE MOUNTED ELEVATION

3 SIDE ELEVATION

6 SIDE ELEVATION

NO.	REVISION	DATE

project:  
 scale: 3/4" = 1'-0"  
 submitted on:  
 client:

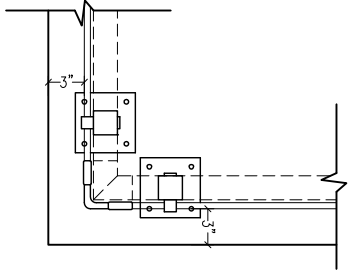
contract:  
 VIA CORE MULTI-LINE RAILING SYSTEM

drawn by:  
 checked by:  
 date:  
 drawing no.:

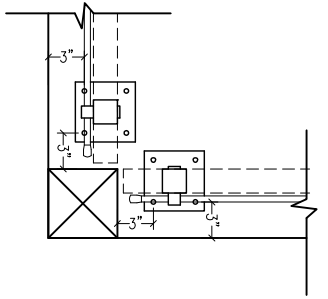
NOTE:  
 REFER CB-12 FOR CORNER OPTIONS

DATE:	SCALE:

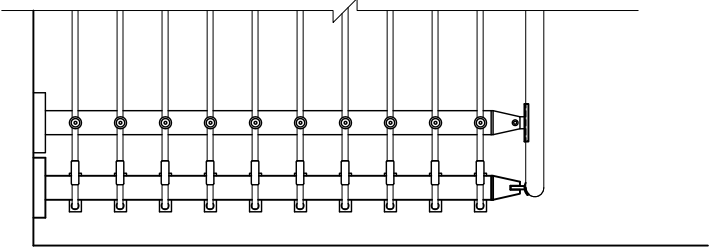
CB-11



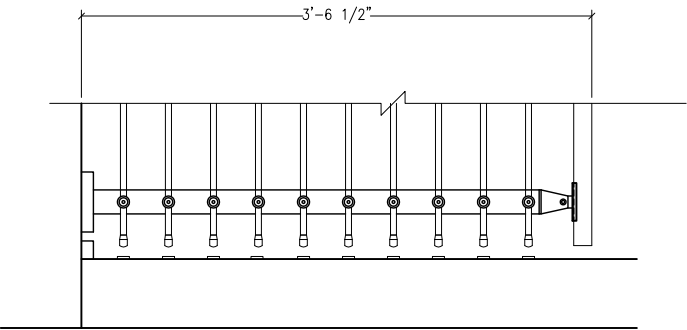
1 CUBE DOUBLE POST CORNER 'A'  
PLAN



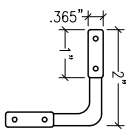
3 CUBE DOUBLE POST CORNER 'B'  
PLAN



2 CUBE DOUBLE POST CORNER  
ELEVATION



4 CUBE DOUBLE POST CORNER  
ELEVATION



5 ELBOW DETAIL  
PLAN

NO.	REVISIONS



project: \_\_\_\_\_  
 scale: 3/4" = 1'-0"  
 submitted on: \_\_\_\_\_  
 client: \_\_\_\_\_  
 content: \_\_\_\_\_  
 VMA CUBE MULTILINE PALING SYSTEM

APPROVED FOR FABRICATION	
DATE: _____	SIGN: _____

drawn by: \_\_\_\_\_  
 checked by: \_\_\_\_\_  
 drawing no.: **CB-12**