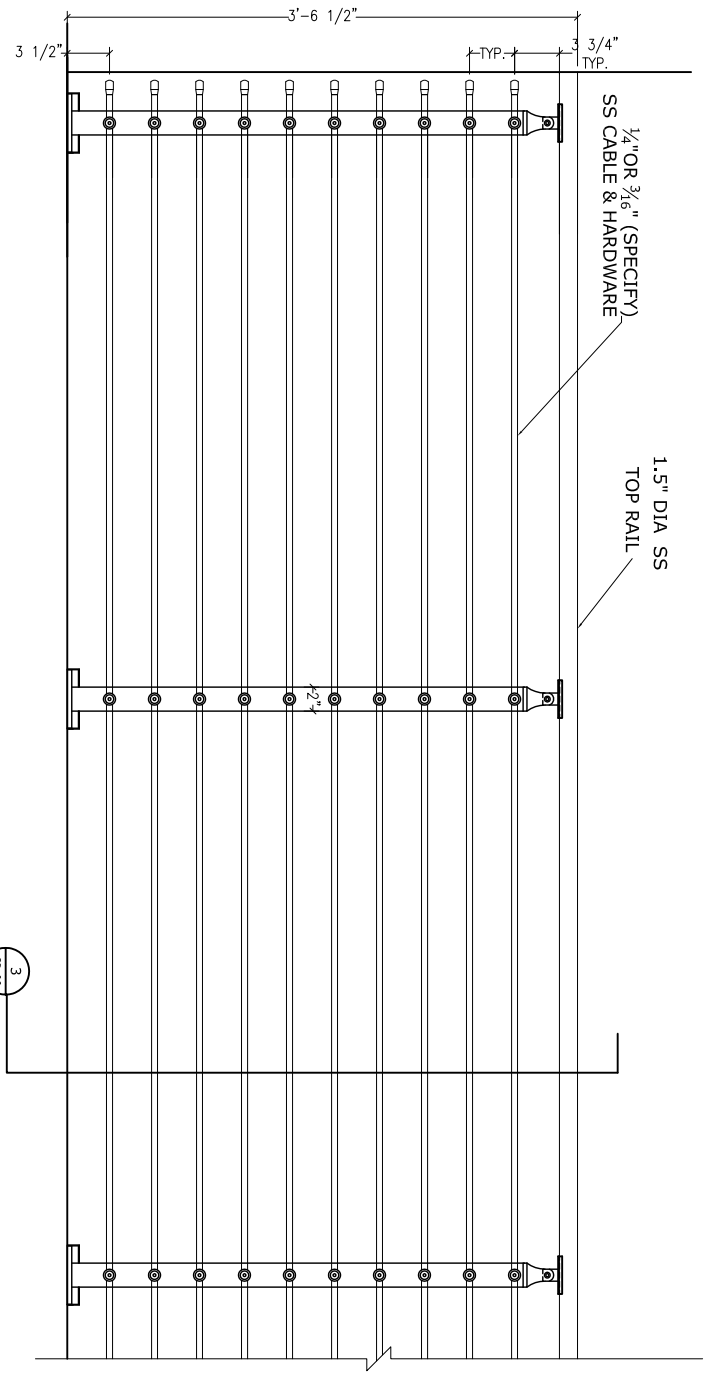
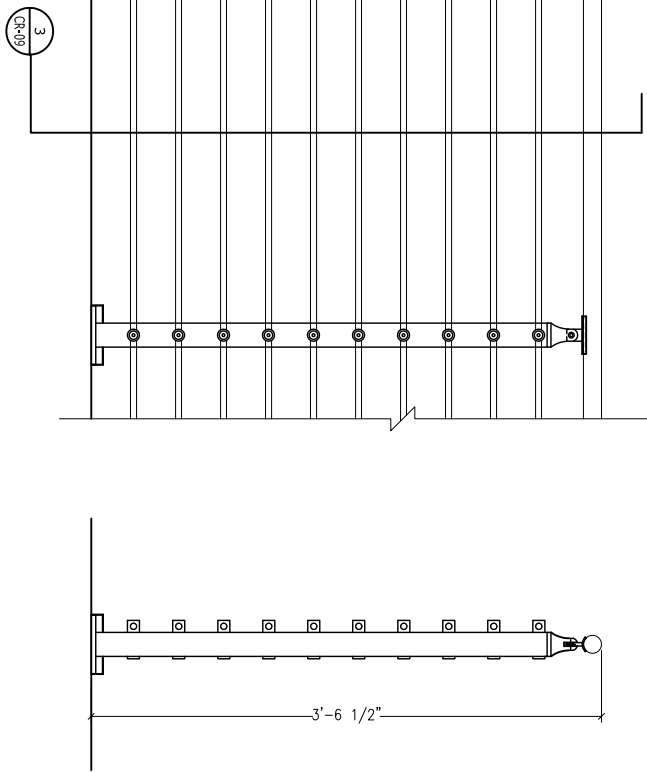


1
CR-09
CIRCA MULTI-LINE RAILING
PLAN



2
CR-09
CIRCA MULTI-LINE RAILING
ELEVATION



3
CR-09
SECTION

APPROVED FOR FABRICATION	
DATE	SCALE

NOTE:
REFER CR-11 FOR MOUNTING OPTIONS
REFER CR-12 FOR CORNER OPTIONS

NO.	REVISION	DATE

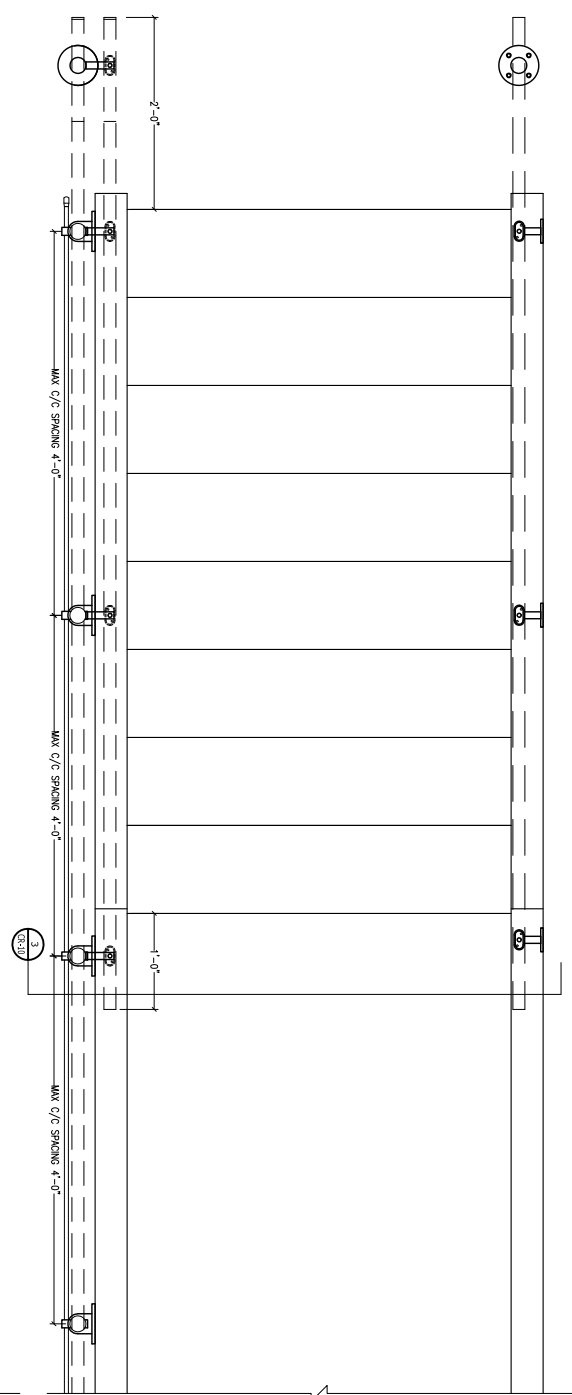


VMA ARCHITECTURAL
401 E. 47th St. #121 BUSINESS
LEWISVILLE, OH 44041
www.vmaarchitect.com

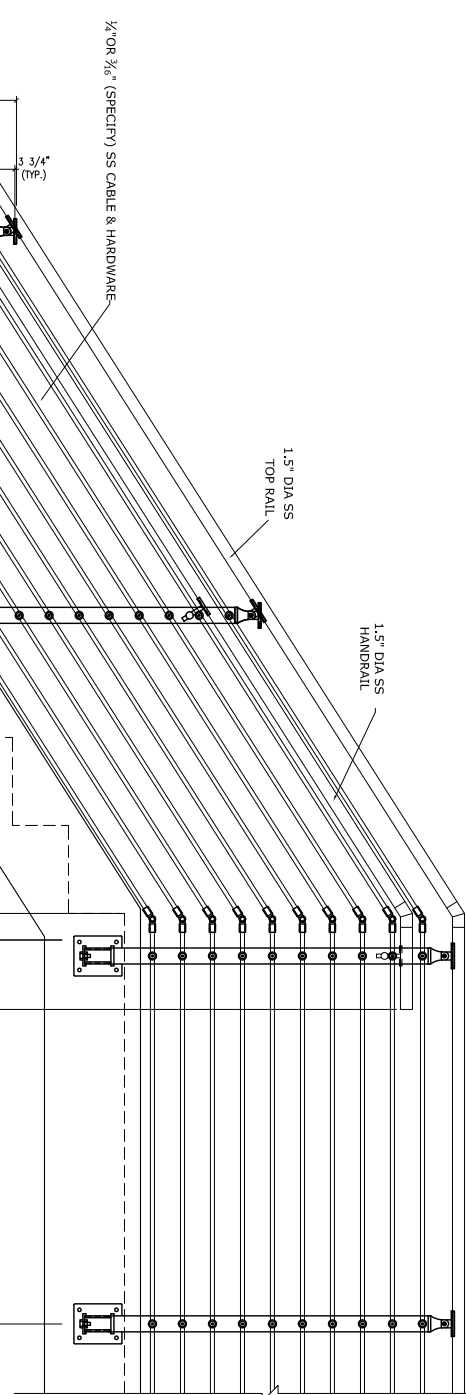
project:
scale: 3/4" = 1'-0"
submitted on:
client:
contract:
VMA CIRCA MULTI-LINE RAILING SYSTEM

drawn by:
checked by:
date:
drawing no.:
CR-09

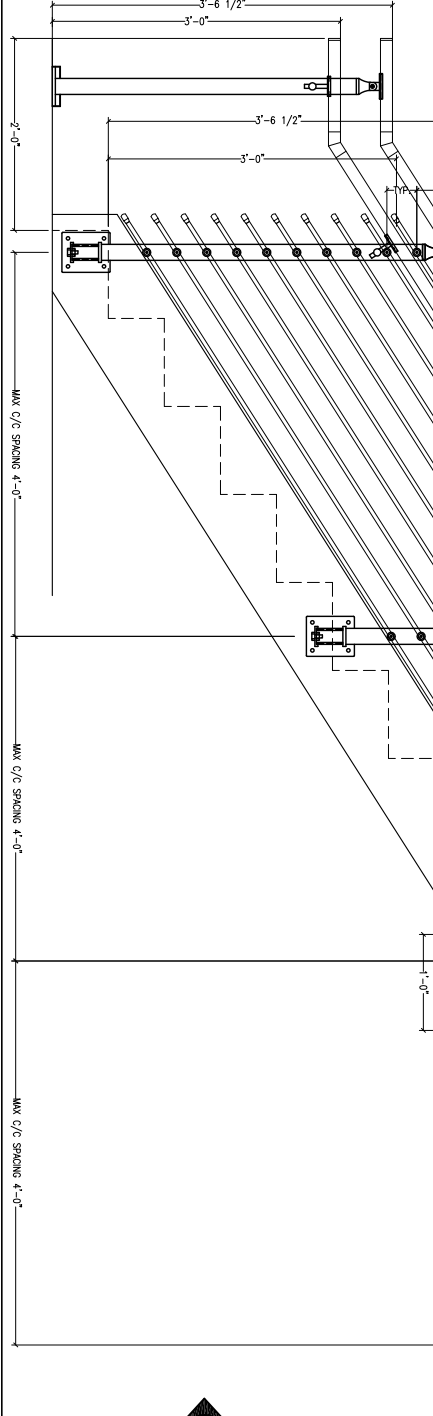
NO.	REVISION	DATE



1
 (REV)
 CIRCA MULTI-LINE RAILING -STAIR APPLICATION
 PLAN



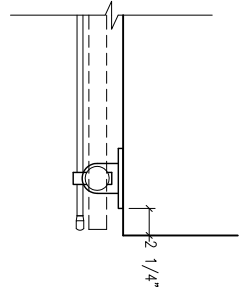
2
 (REV)
 CIRCA MULTI-LINE RAILING
 SECTION
 ELEVATION



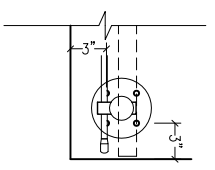
3
 (REV)
 CIRCA MULTI-LINE RAILING-STAIR APPLICATION
 ELEVATION

DATE	SCALE

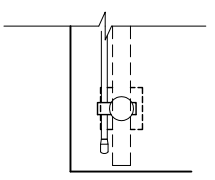
PROJECT:
 SCALE: 1/2" = 1'-0"
 SUBMITTED ON:
 CLIENT:
 CONTRACT: VIA CIRCA MULTI-LINE RAILING SYSTEM
 DRAWN BY:
 CHECKED BY:
 DATE:
 DRAWING NO.: CR-10



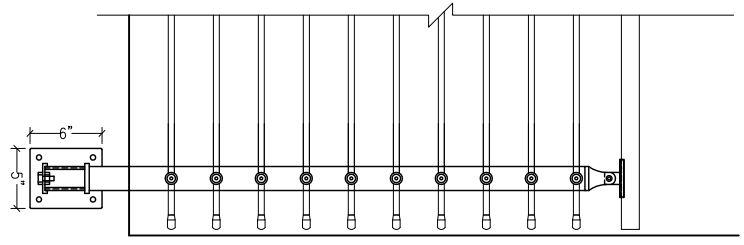
1 MULTI-LINE RAILING FASCIA MOUNTED
 PLAN



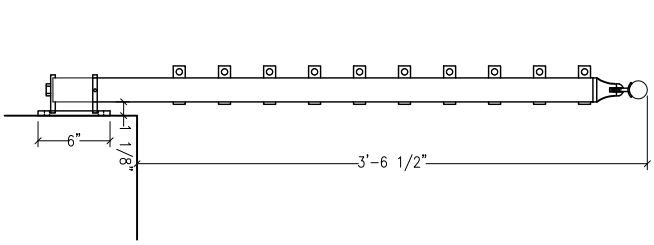
4 MULTI-LINE RAILING TOP MOUNTED
 PLAN



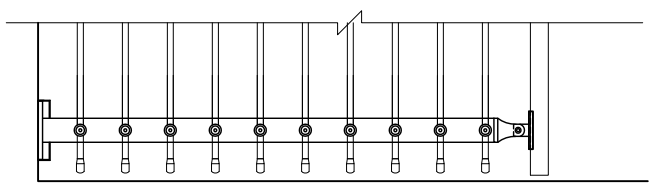
7 MULTI-LINE RAILING CORE MOUNTED
 PLAN



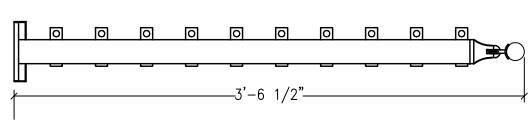
2 MULTI-LINE RAILING FASCIA MOUNTED
 ELEVATION



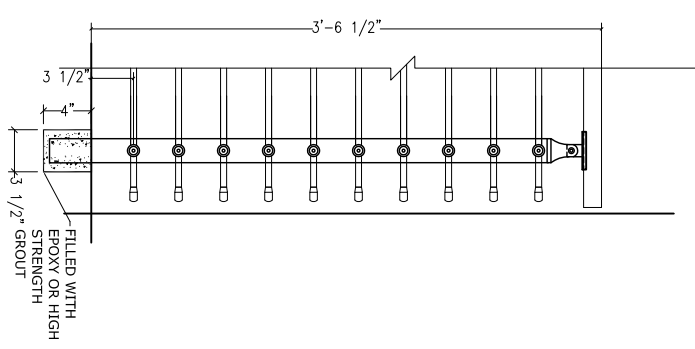
3 SIDE ELEVATION



5 MULTI-LINE RAILING TOP MOUNTED
 ELEVATION



6 SIDE ELEVATION



8 MULTI-LINE RAILING CORE MOUNTED
 ELEVATION

NO.	REVISIONS	DATE

project: _____
 scale: 3/4" = 1'-0"
 submitted on: _____

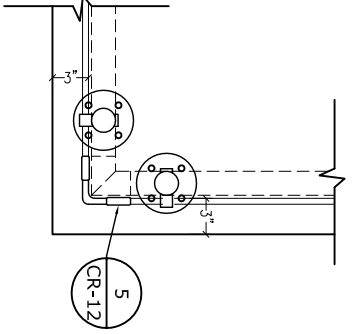
client: _____
 contract: _____
 WITH ORCA MULTILINE RAILING SYSTEM

drawn by: _____
 checked by: _____
 date: _____
 drawing no.: _____

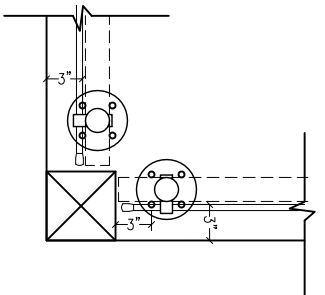
CR-11

NOTE:
 REFER CR-12 FOR CORNER OPTIONS

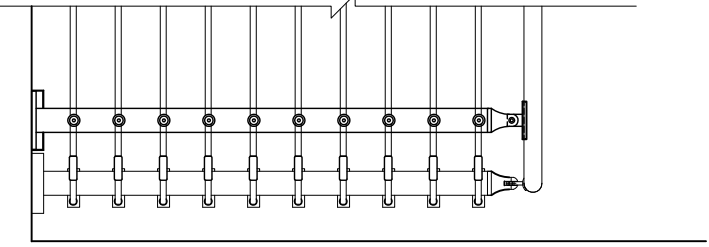
APPROVED FOR FABRICATION	
DATE: _____	SIGNATURE: _____



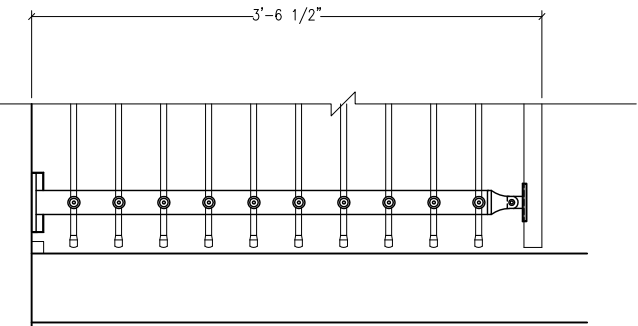
1
CR-12
CIRCA DOUBLE POST CORNER 'A'
PLAN



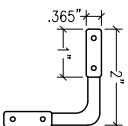
3
CR-12
CIRCA DOUBLE POST CORNER 'B'
PLAN



2
CR-12
CIRCA DOUBLE POST CORNER
ELEVATION



4
CR-12
CIRCA DOUBLE POST CORNER
ELEVATION



5
CR-12
ELBOW DETAIL
PLAN

NO.	REVISIONS	DATE



project: _____
 scale: 3/4" = 1'-0"
 submitted on: _____
 client: _____
 contract: VMA CIRCA MULTILINE PALMING SYSTEM

drawn by: _____
 checked by: _____
 drawing no.: _____

DATE	SHEET

CR-12